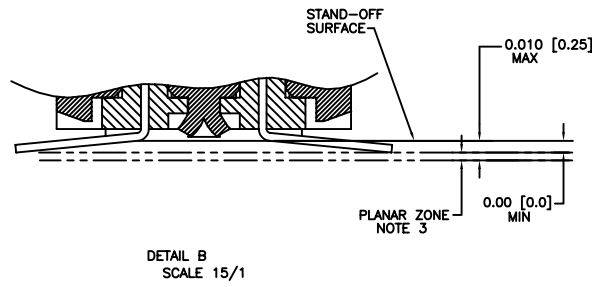
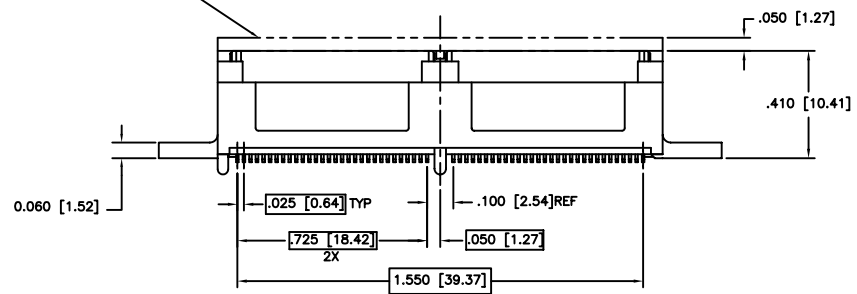
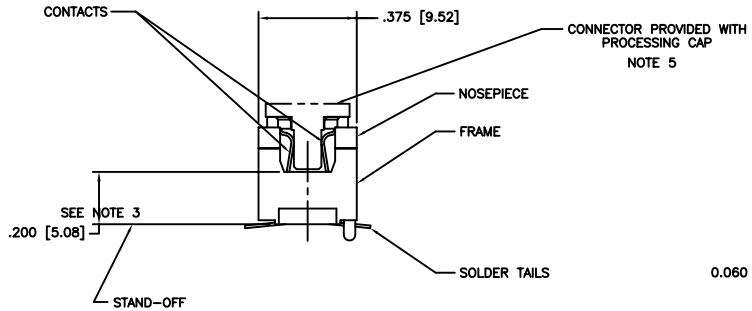
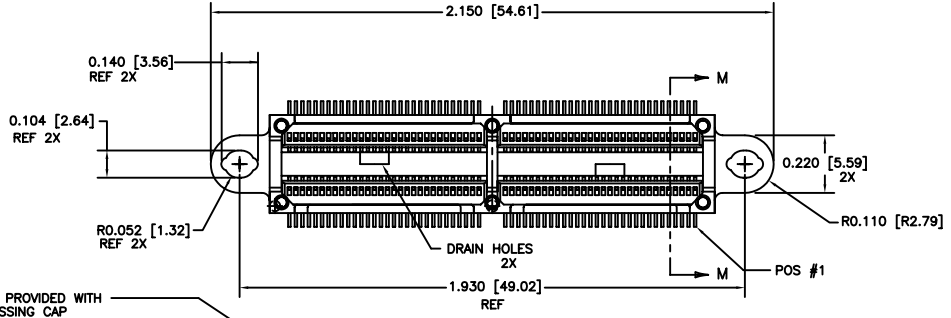
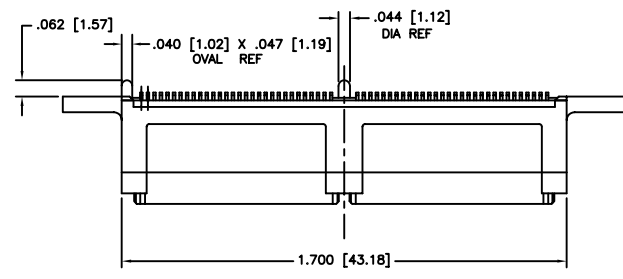
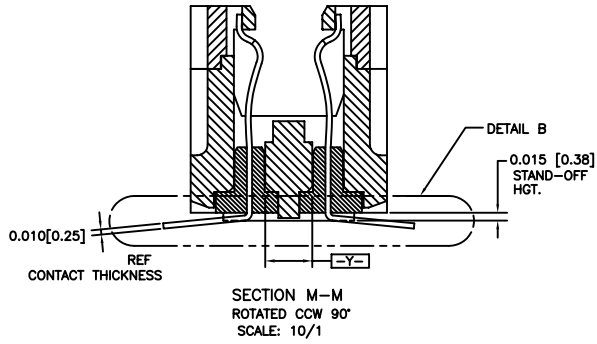


PRODUCT NUMBER

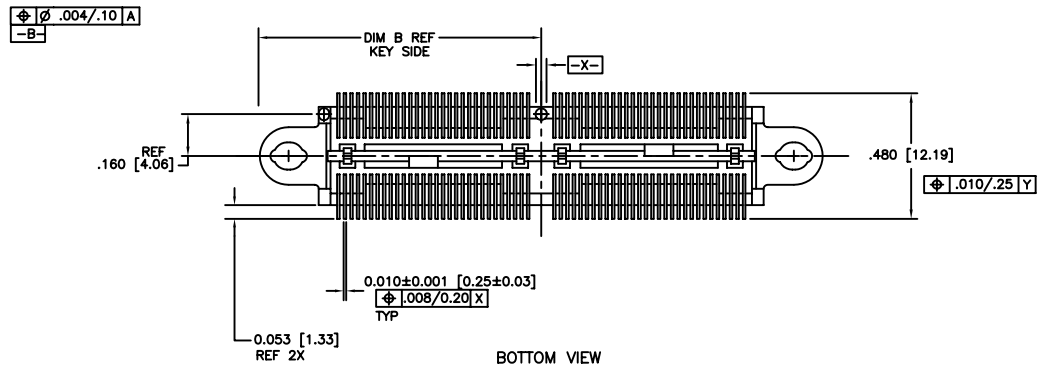
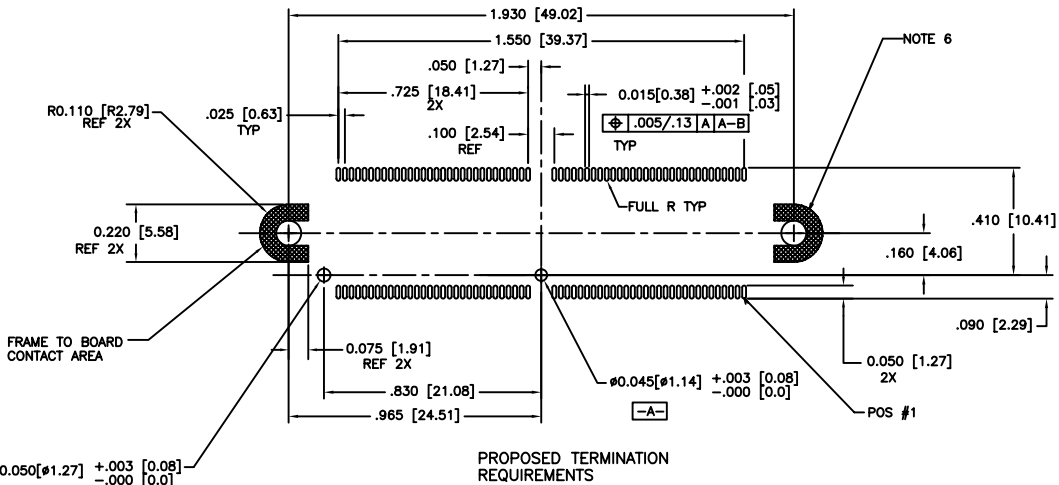
SEE TABLE



| | | | | | | | | | |
|--------------|----------|------------------|---------|---------------------------------------|-------------|--------------|--|-------------------------------|--|
| mat'l. code | | surface ISO 1902 | | tolerance ISO 406 ISO 1101 | | projection | | product family | |
| MICROCONNECT | | ✓ | | MICROCONNECT | | MICROCONNECT | | MICROPAX | |
| tr | ecp no | dr | date | tolerances unless otherwise specified | | INCH/MM | | title | |
| A | v03-0849 | GIP | 8/04/03 | angles | linear | .001/0.01 | | .025M SURFACE MOUNT | |
| B | m05-0082 | MHT | 5/06/05 | | | .0001/0.001 | | RECEPT, DOUBLE MODULE | |
| C | m06-0279 | MNR | 7/22/06 | 0°±2° | | .0001/0.001 | | scale 1:1 | |
| D | m08-0251 | MHT | 9/08/08 | dr | T. BRUNGARD | 1/21/03 | | dwg no | |
| | | engr | M. GRAY | | | 1/21/03 | | sheet 1 of 2 size | |
| | | chr | M. GRAY | | | 1/21/03 | | 10022034 A3 | |
| | | appd | M. GRAY | | | 1/21/03 | | type Product Customer Drawing | |
| sheet index | revision | D | D | | | | | | |
| | sheet | 1 | 2 | | | | | | |

FCJ
FCJconnect.com
Copyright FCJ

| | | |
|----------------|-----------------|------------------------|
| PRODUCT NUMBER | NO. OF CONTACTS | CONTACT PLATING NOTE 2 |
| 10022034-001 | 120 | 30 GXT |
| 10022034-001LF | | |



- NOTES:
- MATERIALS:
DIELECTRIC: LCP
CONTACTS: BeCu
FRAME: ZINC ALLOY #3
 - PLATING:
SOLDER TAILS: 150u"/3.81um Sn Pb
FRAME: 100u"/2.54um Ni
CONTACTS: 30u"/.76um GXT OVER 50u"/1.27um Ni
OR 60u"/1.52um GXT OVER 75u"/1.90um Ni.
LEAD FREE OPTION:
SOLDER TAILS: 150u"/3.81um Sn
FRAME: 100u"/2.54um Ni
CONTACTS: 30u"/.76um GXT OVER 50u"/1.27um Ni
OR 60u"/1.52um GXT OVER 75u"/1.90um Ni.
 - WHEN THE CONNECTOR IS MATED WITH THE OPPOSITE HALF, THE PARALLEL BD. TO BD. HGT. IS .47 ± .01. (APPLYS TO VERT. THRU & SURFACE MT. STYLES)
 - WHEN MEASURED IN THE UNRESTRAINED STATE, THE BOTTOM EDGE OF ALL SOLDER TAIL TIPS SHALL LIE IN A PLANAR ZONE AS DESCRIBED IN DETAIL B. THE ZONE IS DEFINED BY A PLANE ESTABLISHED ACROSS THE BASE OF THE TWO MOUNT LUG/STAND-OFFS.
 - DO NOT REMOVE PROCESSING CAP UNTIL SOLDERING IS COMPLETED. CAP WILL PREVENT POTENTIAL NOSE PIECE BOW DURING HIGH TEMP. SOLDERING PROCESS.
 - FOR HOLDDOWN APPLICATION DATA, INCLUDING HOLE SIZES FOR VARIOUS TYPES OF HARDWARE SEE TA-932.
 - PART NUMBER WITH LF SUFFIX AT THE END IS LEAD FREE.
 - IF "LF" P/N THE PRODUCT MEETS EUROPEAN UNION DIRECTIVES AND OTHER COUNTRY REGULATION AS DESCRIBED IN GS-22-008.
 - THE HOUSING WILL WITHSTAND EXPOSURE TO 260°C PEAK TEMPERATURE FOR 20 SECONDS IN A CONVECTION, INFRA-RED OR VAPOR PHASE REFLOW OVEN.
 - SEE BUS-20-084 (SET-UP APPLICATION SPEC.) FOR REFERENCE.

| | | | | | |
|---------------------------------------|----------|-------------|---------------------|--|-------------------------------|
| mat'l. code | | surface | tolerance | projection | product family |
| | | ISO 1902 | ISO 406 ISO 1101 | | MICROPAX |
| ltr | ecn no | dr | date | title | |
| D | | | | .025M SURFACE MOUNT RECEPT, DOUBLE MODULE | |
| tolerances unless otherwise specified | | | | linear | INCH/MM |
| | | | | 0° ± 2° | scale 1:1 |
| | | | | dr | T. BRUNGARD 1/21/03 |
| | | | | enr | M. GRAY 1/21/03 |
| | | | | chr | M. GRAY 1/21/03 |
| | | | | appd | M. GRAY 1/21/03 |
| sheet | revision | FCI | | | |
| index | sheet | 10022034 A3 | | | |
| | | | | | type Product Customer Drawing |

Copyright FCI
 FCconnect.com